

SLM Series with Damping

Construction

SLM standard pneumatic spring series with integrated viscose damper, 6 sizes

Properties

- Up to 70 % reduction in increased resonance through vertical source isolation
- Use in resonance region permitted
- Load range 3.0 kN – 100 kN
- Natural frequency (stat.) 4 Hz – 7 Hz (see diagrams on the right)

Area of application

Presses, automatic cutting presses, nibbling machines, compressors, packaging systems

Materials

- As standard series SLM
- Damper in elastomer-metal combination with viscose filling

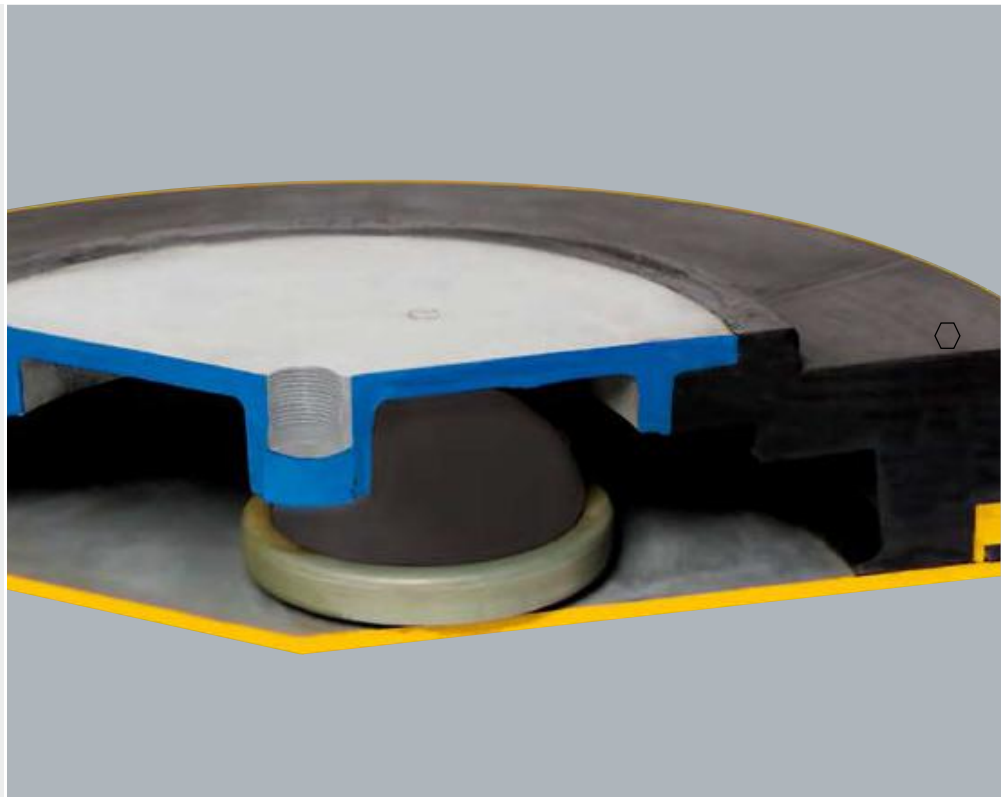
Levelling

Levelling range ± 6 mm, air-pressure controlled

Accessories

Automatic levelling control:

- Mechanical-pneumatic version
- Electro-pneumatic version (Reset time and accuracy programmable)



Reduced maintenance due to automatic pressure monitoring

Delivery contents

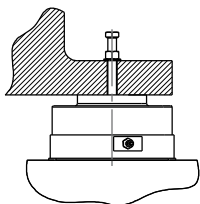
Pneumatic spring element with hexagon head screw

Accessory

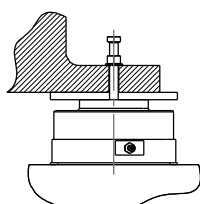
Mounting plate to distribute planar load over full area of element, in cases where machine footprint is undersize (see page 13)

Mounting options

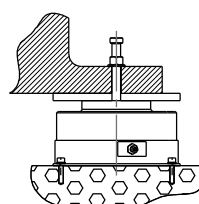
SLM pneumatic spring type



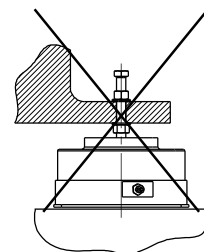
SLM pneumatic spring type with mounting plate for undersize machine foot

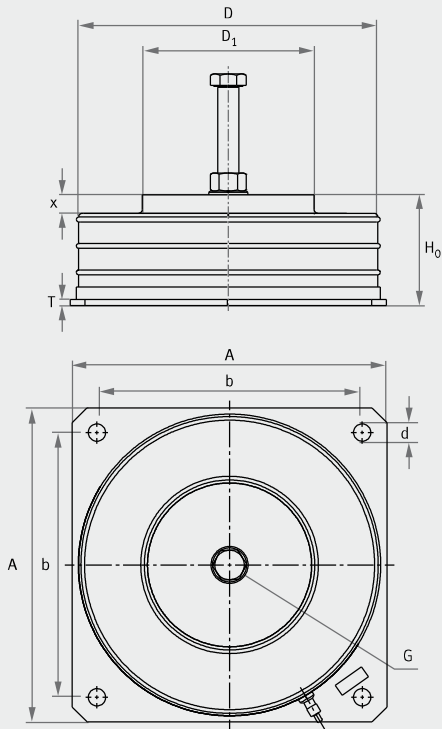


SLM pneumatic spring type with mounting plate, bolted to the floor



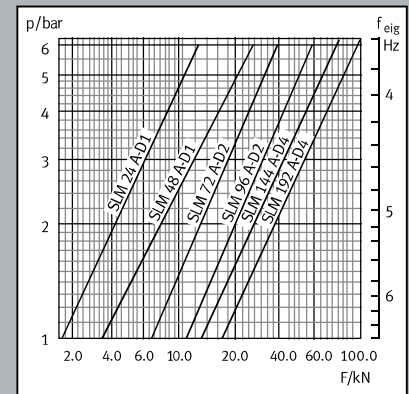
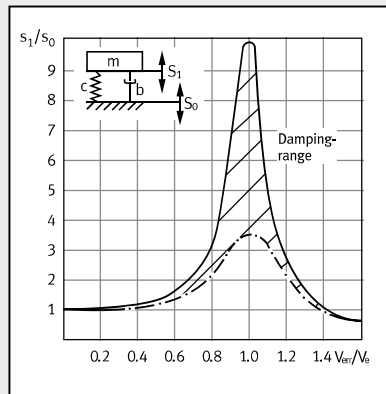
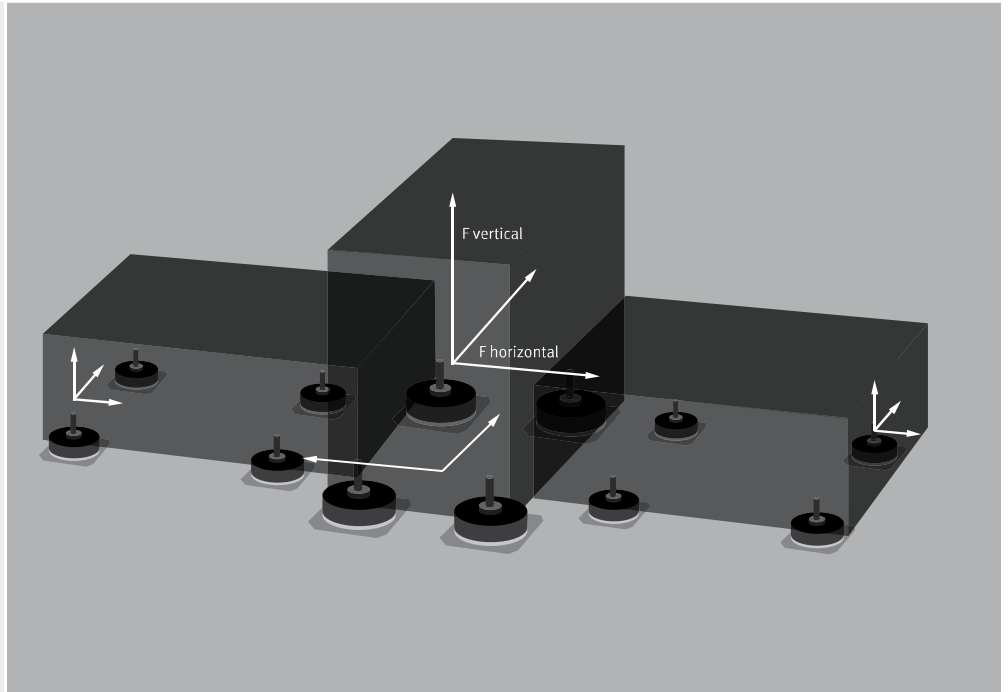
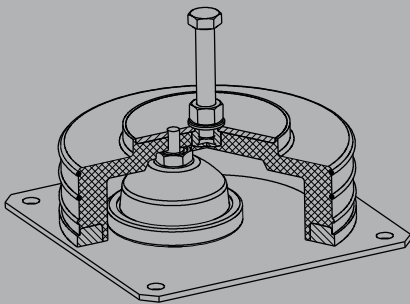
Installation not permissible





Standard version: hexagon head screw

Leveling by means of air pressure



SLM Series Dimension table Dimensions in mm	D	H ₀	D1	G	L	Machine base thick- ness (max.)	Ni	X	A	b	d	T	Weight kg	Load (max.) kN
SLM 24 A-D1	245	90	138	M16	100	75	± 6	15	225	215	14	5	8.2	13.0
SLM 48 A-D1	338	90	205	M16	100	75	± 6	15	343	305	14	5	16.1	26.0
SLM 72 A-D2	380	91	255	M24 x 1.5	140	75	± 6	17	385	310	20	6	23.9	38.0
SLM 96 A-D2	468	90	300	M24	130	75	± 6	15	470	406	20	6	32	55.0
SLM 144 A-D4	550	91	360	M24 x 1.5	140	75	± 6	17	555	480	20	6	47.9	76.0
SLM 192 A-D4	610	90	430	M24	130	75	± 6	15	610	508	20	6	57.9	100.0