

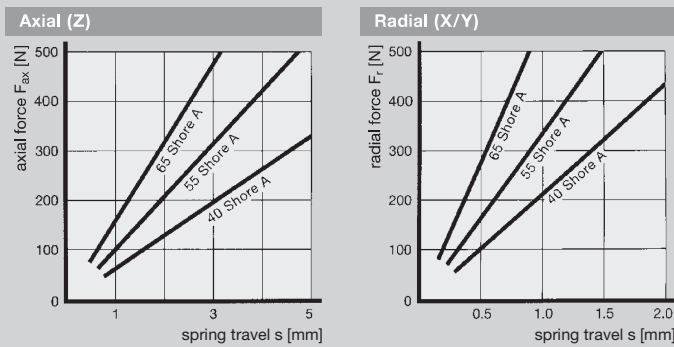
# SCHWINGMETALL® Torsion Bushings



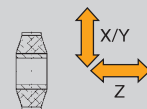
Spring Stiffness			Max. Loads			Mass Piece [kg]	Elastomer Hardness [Shore A]	Mould No.	Part No.
$C_x$ [N/mm]	$C_y$ [N/mm]	$C_z$ [N/mm]	$F_x$ [N]	$F_y$ [N]	$F_z$ [N]				
217	217	66	450	450	330	0.168	40	21489	3926402000
333	333	104	600	600	500	0.168	55	21489	3926202000
540	540	156	700	700	600	0.168	65	21489	3926102000

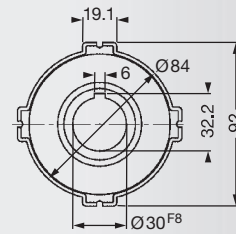
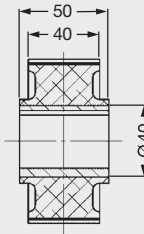
- ▶ four part outer ring, width of slit 1.5 mm, assembly dimension  $\varnothing$  64 mm
- ▶ radial main direction of loading, static axial load prohibited

## Characteristic Curves of Mould No. 21489



### Directions of Loading





Ø30 F8 +0.053  
+0.020

### Torsion Bushing

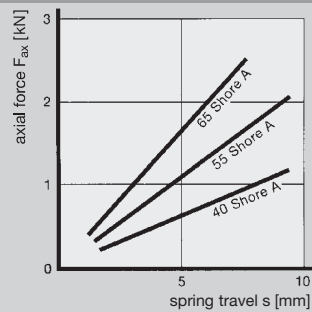
Spring Stiffness			Max. Loads			Mass Piece [kg]	Elasto- tomer Hardness [Shore A]	Mould No.	Part No.
C <sub>x</sub> [N/mm]	C <sub>y</sub> [N/mm]	C <sub>z</sub> [N/mm]	F <sub>x</sub> [N]	F <sub>y</sub> [N]	F <sub>z</sub> [N]				
554	554	124	1100	1100	950	0.53	40	27843a	3926404000
990	990	207	1750	1750	1650	0.53	55	27843a	3926204000
1652	1652	326	1800	1800	2200	0.53	65	27843a	3926104000

► four part outer ring,  
width of slit 1.2 mm  
assembly dimension Ø 83 mm

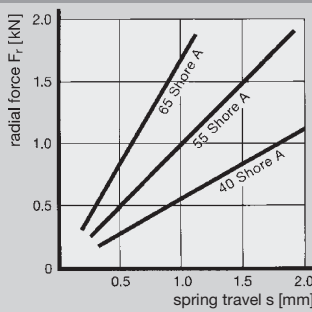
► radial main direction of loading,  
static axial load prohibited

### Characteristic Curves of Mould No. 27843a

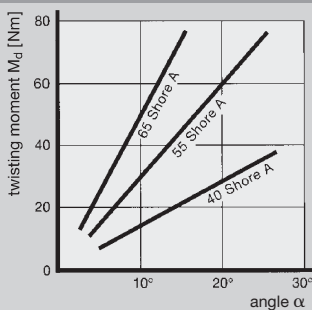
Axial (Z)



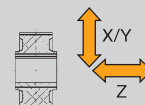
Radial (X/Y)



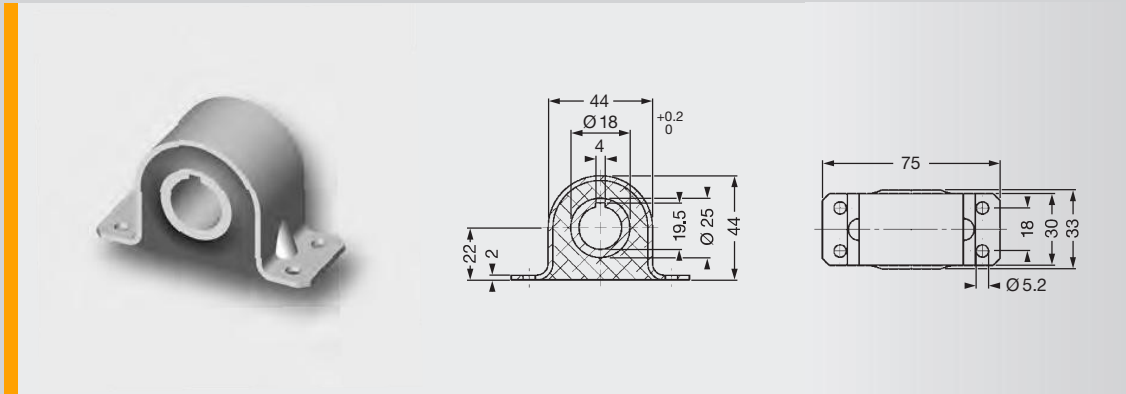
Torsion



Directions of Loading



# SCHWINGMETALL® Torsion Mounts

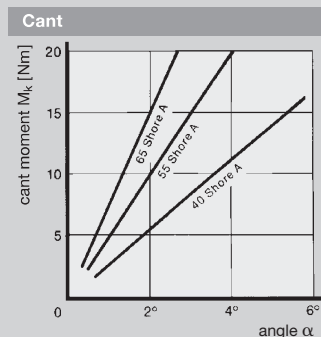
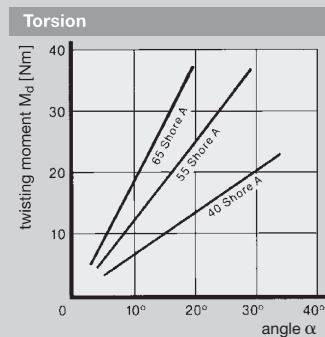
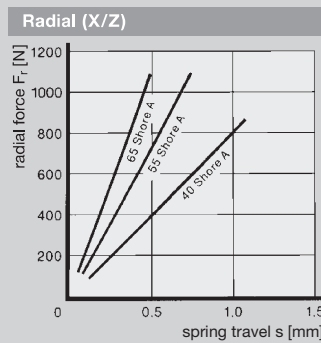
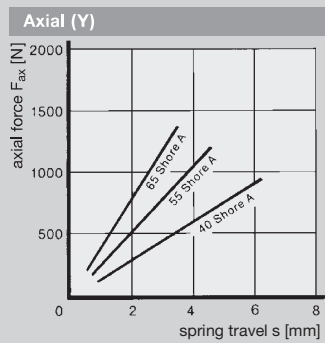


Mould No. 31510

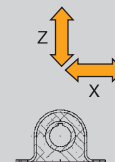
Spring Stiffness			Max. Loads			Mass Piece [kg]	Elasto- tomer Hardness [Shore A]	Mould No.	Part No.
$C_x$ [N/mm]	$C_y$ [N/mm]	$C_z$ [N/mm]	$F_x$ [N]	$F_y$ [N]	$F_z$ [N]				
800	152	800	850	750	850	0.153	40	31510	3936401001
1413	267	1413	1100	1100	1100	0.153	55	31510	3936201001
2187	400	2187	1150	1300	1150	0.153	65	31510	3936101001
1259	189	1259	1500	1100	1500	0.423	40	31700	3936402001
2267	344	2267	2200	1900	2200	0.423	55	31700	3936202001
3378	567	3378	2800	2200	2800	0.423	65	31700	3936102001

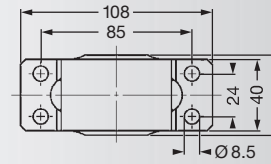
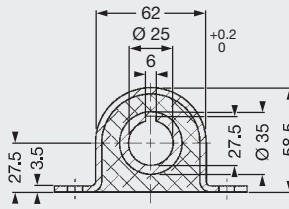
► radial main direction of loading,  
static axial load prohibited

## Characteristic Curves of Mould No. 31510



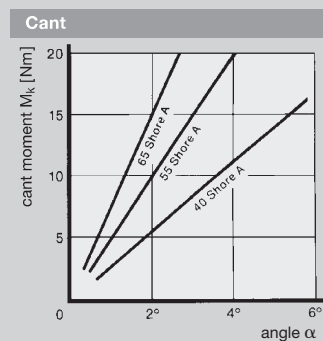
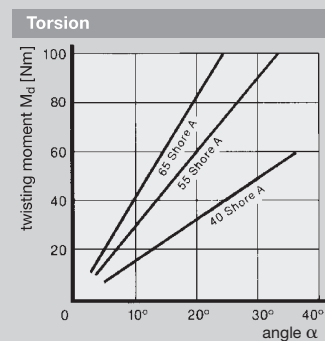
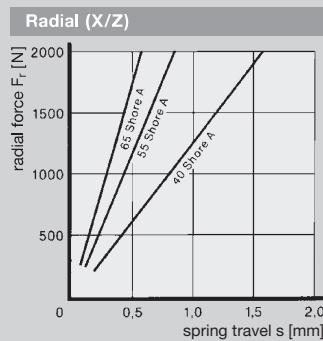
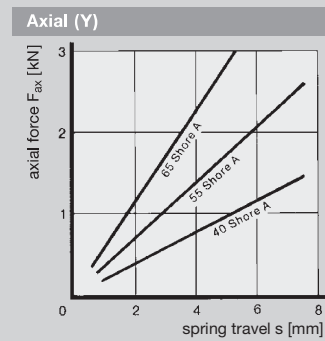
Directions of Loading





Mould No. 31700

### Characteristic Curves of Mould No. 31700



Directions of Loading

