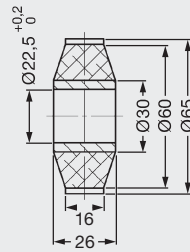


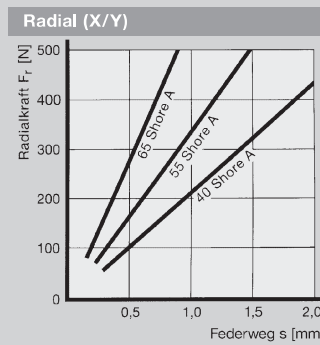
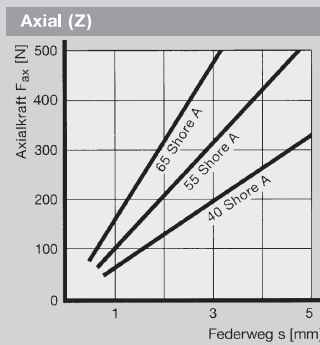
SCHWINGMETALL® Torsionselemente



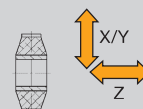
Federsteifigkeiten			max. Belastungen			Masse Stück [kg]	Elastomer Härte [Shore A]	Form-Nr.	Artikel-Nr.
C _x [N/mm]	C _y [N/mm]	C _z [N/mm]	F _x [N]	F _y [N]	F _z [N]				
217	217	66	450	450	330	0,168	40	21489	3926402000
333	333	104	600	600	500	0,168	55	21489	3926202000
540	540	156	700	700	600	0,168	65	21489	3926102000

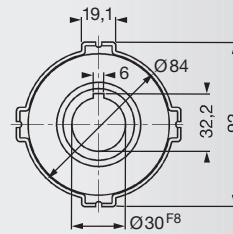
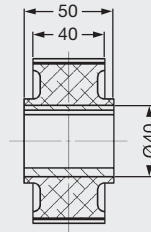
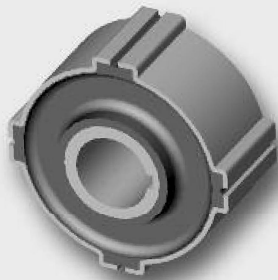
- ▶ Außenring vierteilig, Schlitzbreite 1,5 mm
Einbaumaß Ø 64 mm
- ▶ Hauptbelastungsrichtung Radial, statische axiale Lasten unzulässig

Kennlinien Form-Nr. 21489



Belastungsrichtungen





Ø30 F8 +0,053
+0,020

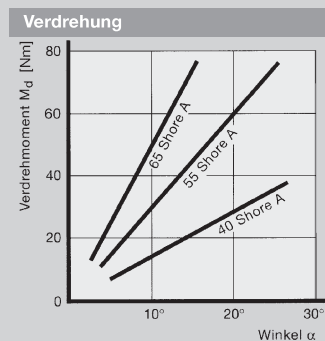
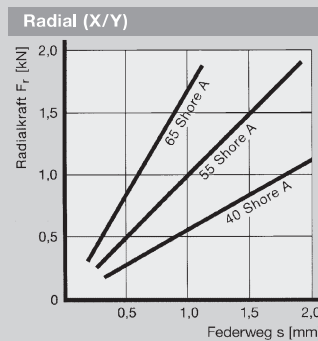
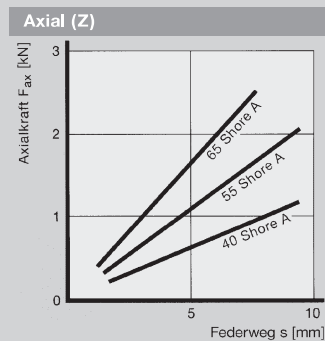
Torsionsbuchse

Federsteifigkeiten			max. Belastungen			Masse Stück [kg]	Elastomer Härte [Shore A]	Form-Nr.	Artikel-Nr.
C _x [N/mm]	C _y [N/mm]	C _z [N/mm]	F _x [N]	F _y [N]	F _z [N]				
554	554	124	1100	1100	950	0,53	40	27843a	3926404000
990	990	207	1750	1750	1650	0,53	55	27843a	3926204000
1652	1652	326	1800	1800	2200	0,53	65	27843a	3926104000

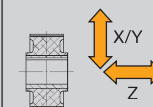
► Außenring vierteilig,
Schlitzbreite 1,2 mm
Einbaumaß Ø 83 mm

► Hauptbelastungsrichtung Radial,
statische axiale Lasten unzulässig

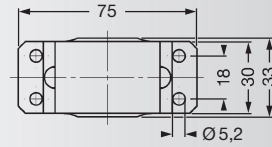
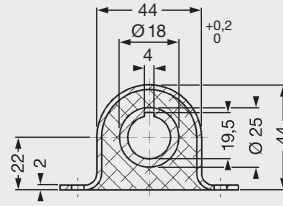
Kennlinien Form-Nr. 27843a



Belastungsrichtungen



SCHWINGMETALL® Torsionselemente

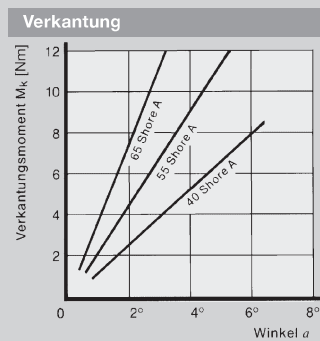
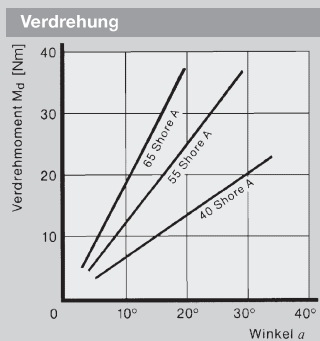
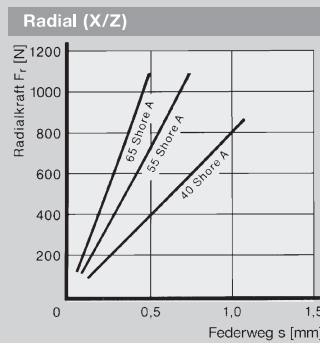
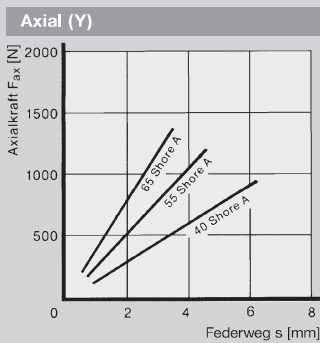


Form-Nr. 31510

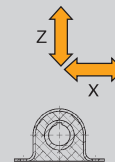
Federsteifigkeiten			max. Belastungen			Masse Stück [kg]	Elastomer Härte [Shore A]	Form-Nr.	Artikel-Nr.
C_x [N/mm]	C_y [N/mm]	C_z [N/mm]	F_x [N]	F_y [N]	F_z [N]				
800	152	800	850	750	850	0,153	40	31510	3936401001
1413	267	1413	1100	1100	1100	0,153	55	31510	3936201001
2187	400	2187	1150	1300	1150	0,153	65	31510	3936101001
1259	189	1259	1500	1100	1500	0,423	40	31700	3936402001
2267	344	2267	2200	1900	2200	0,423	55	31700	3936202001
3378	567	3378	2800	2200	2800	0,423	65	31700	3936102001

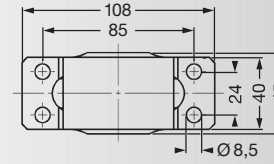
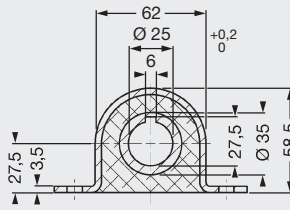
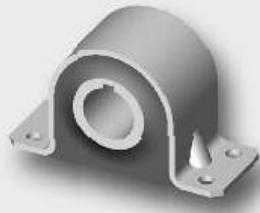
► Hauptbelastungsrichtung Radial,
statische axiale Lasten unzulässig

Kennlinien Form-Nr. 31510



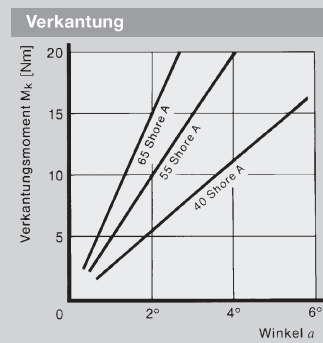
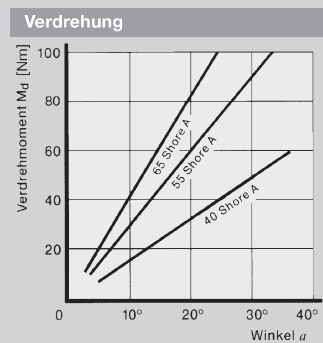
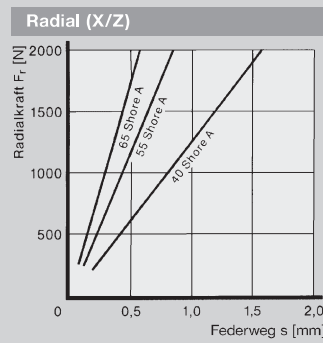
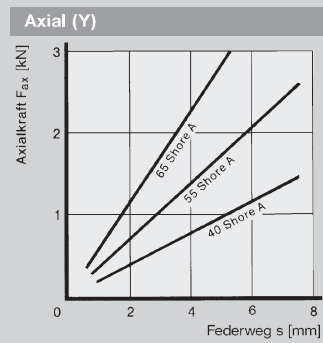
Belastungsrichtungen





Form-Nr. 31700

Kennlinien Form-Nr. 31700



Belastungsrichtungen

